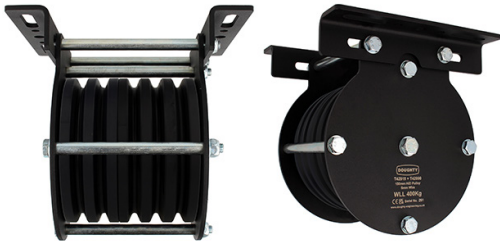




Product Data Sheet

Ø150mm Heavy Duty Pulleys - Wire



A Ø150mm quin sheave heavy duty pulley suitable for 6mm wire	
Part Nos	T42915 - 6mm Wire - Quin
Materials	Plates - CR4 Mild Steel Sheaves - Nylon 6 Fixings - Grade 8.8
Finish	Powder painted crackle black
WLL	400Kg
Safety factor	5:1

Dimensions in mm

T42915

