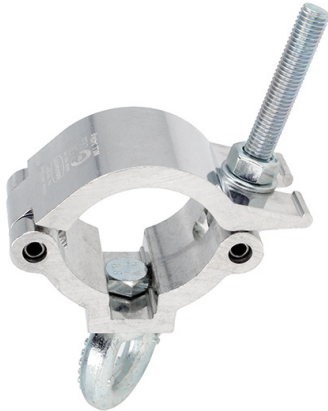




Product Data Sheet

# Mammoth Hanging Clamp



A high tensile extruded half coupler fitted with an M12 eye nut.	
<b>Part Nos</b>	T57450 - Polished T57451 - Powder Painted Satin Black
<b>Tube Diameter</b>	Ø60 - 63mm (2.36" - 2.48")
<b>Materials</b>	Main Body - AW6082 T6 Aluminium Roll Pins - Stainless Steel Eyebolt Assy - Grade 8.8
<b>Max Tightening Torque</b>	30Nm
<b>Fixings</b>	Fitted with an M12 Eye Nut
<b>WLL</b>	340Kg Vertical Load
<b>Weight</b>	0.51Kg (1.12 lbs)
<b>Factor of Safety</b>	5:1
<b>Approval</b>	TÜV Approved

**WARNING**

LOAD DIRECTION MUST BE IN LINE WITH THE BOLT SECURING THE EYE NUT IN PLACE FOR ANY OTHER LOAD DIRECTIONS SEE OUR T42307 PINK EYE NUT

Dimensions in mm

