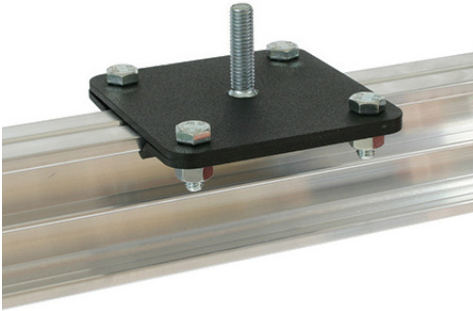




Product Data Sheet

Studio Rail 60 - Flat Ceiling Bracket



A mild steel flat ceiling bracket with a countersunk M10 hole	
Part Nos	T84125
Material	S275 Mild Steel Grade 8.8 Fixings
Finish	Powder painted black
WLL	100Kg
Safety Factor	5:1
Weight	0.48Kg

Dimensions in mm

