

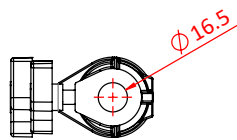


# Socket Adaptors

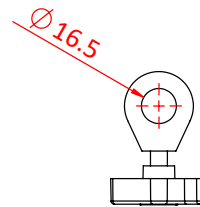
Product Data Sheet



| Cast aluminium socket adaptors |  |
|--------------------------------|--|
| <b>Part Nos</b>                | G1002 - 29mm x 16mm - 0.43Kg<br>G1003 - 16mm x 16mm - 0.34Kg |
| <b>Materials</b>               | Cast aluminium   |
| <b>Finish</b>                  | Powder painted crackle black                                 |
| <b>WLL</b>                     | Not Rated  |



**G1002**



**G1003**

